

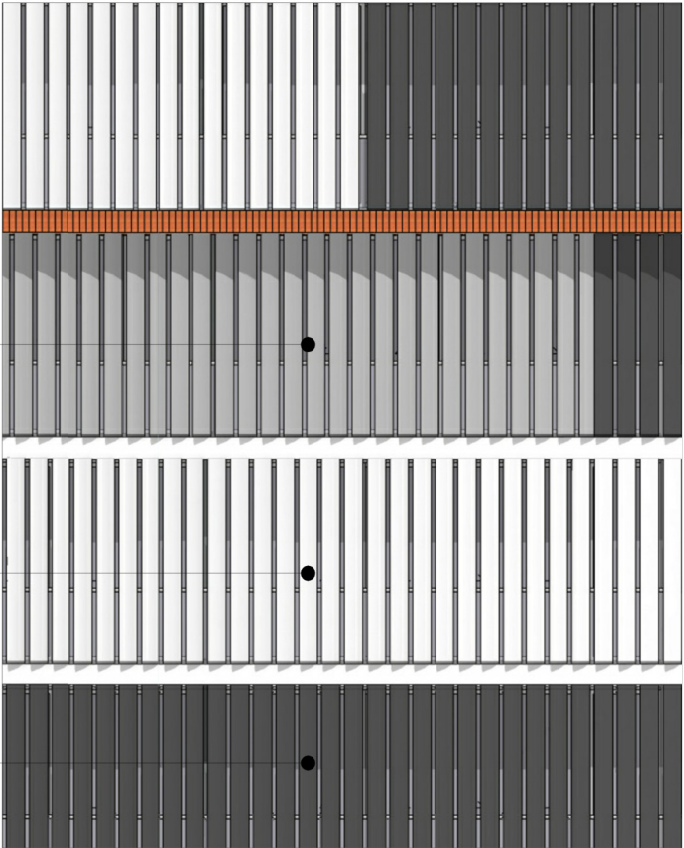


IMAGERY

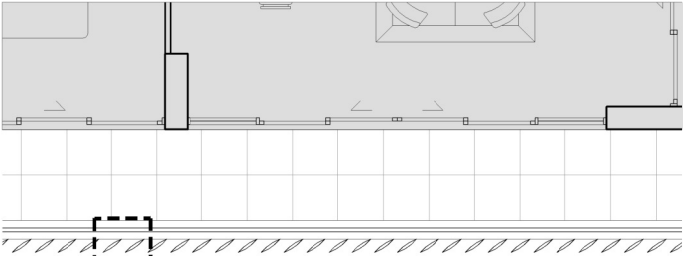
UNIVERSAL ANODISERS -
SATIN SILVER GREY

UNIVERSAL ANODISERS -
SATIN SPANISH SILVER

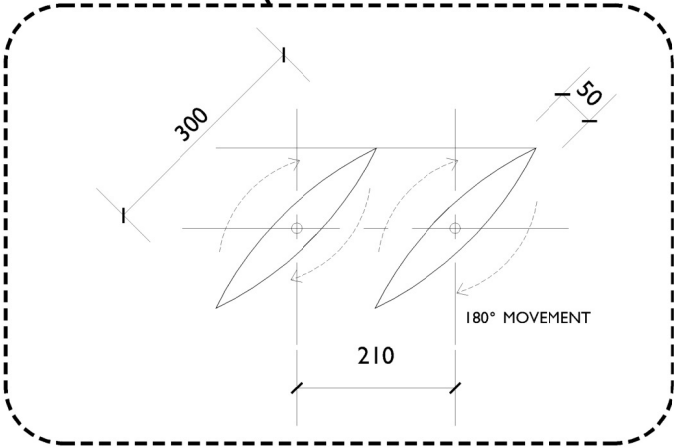
UNIVERSAL ANODISERS -
SATIN CHARCOAL GREY



PART ELEVATION



PART PLAN



TYPICAL LOUVRE DETAIL
SCALE 1:5 @ A1

© COPYRIGHT-These drawings remain the exclusive copyright of ADM Architects. Reproductions in any form whether electronic, digital or otherwise shall not be allowed except by express permission granted in writing by ADM Architects. Holders users and operators of these drawings require proof evidenced in writing that ADM Architects has written permission to use these drawings or shall otherwise be in breach of the Copyright Act and become liable accordingly.
FIGURED DIMENSIONS- These drawings are not to be scaled. Figured dimensions shall be used in all cases.
NOMINATED ARCHITECT- The nominated Architect for ADM Projects (Australia) Pty Ltd T/AS ADM Architects is Angelo Di Martino ARB No.7608

ISSUE	DATE	DESCRIPTION
A	26.04.19	ISSUED FOR DA

NOT FOR CONSTRUCTION

DRAFT SPECIFICATION

Screens will be Louvreclad Ocean Series (® or equal).
Blades will be operable.

Screens will be manufactured in a anodised aluminium finish.

The operation method will be via electric motor.

Installation and mounting details will be designed in accordance with proprietary systems and recommendations as designed and manufactured by Louvreclad Pty. Ltd.

The base material option will be extruded aluminium.

The operating system will be by electric actuator.



94 Kembla St, Wollongong NSW 2500 PO Box 3061 Wollongong
ph: 02 +228 6400 fax: 02 4221 6455 www.admarchitects.com.au

Project
PROPOSED MIXED USE BUILDING
COMPRISING OF RESIDENTIAL APARTMENTS
ABOVE COMMERCIAL PREMISES
AND CARPARKING

At
LOT 502. D.P. 845275
CORNER KEMBLA AND STEWART STREET
WOLLONGONG
For

CITY INVESTMENTS PTY. LTD

Title
DEVELOPMENT APPLICATION
SCREENING DETAILS

Scale 1:50 @ A1 1:100 @ A3	Date DECEMBER 2018
----------------------------------	-----------------------

Drawn LGD SJ	Checked ADM
-----------------	----------------

ProjectNo. 2017-02	Drawing No. A-118	Issue A
-----------------------	----------------------	------------

copyright of adm architects